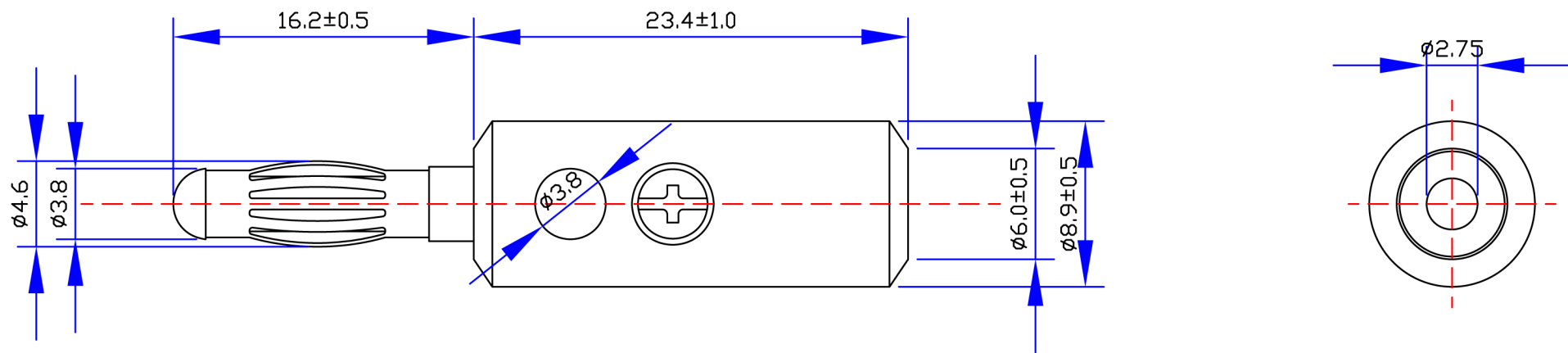


**RoHS  
Compliant  
Drawing For  
Reference Only**



**Specifications**  
 Plug Body: Steel  
 Plug Spring: Copper  
 Finish: Nickel  
 Insulated Handle: ABS

**RATINGS**  
 Current: 10 amps  
 Breakdown Voltage: 3500 Vrms minimum +  
 Contact Resistance: 0.010 ohms maximum

**Technical requirement :**

1. This product should meet EU RoHS related requirement.
2. The surface of plastic part should be without any crackle such as burr,lack,and so on phenomenon.
3. The surface of metal part should be without any defect such as scaur,nick,oxidation and plating problem.
4. The electronic performance should be the same as spec.
5. The un-specified tolerance is :  $<6 \pm 0.2$   
 $6 \sim 20 \pm 0.3$   
 $>20 \pm 0.4$

**DCI DRAGON CITY INDUSTRIES LIMITED**

Design			K.W Law	Remark		Scale	
Drawing			W.K Yeung	Remark		Material	
Check			K.L Wong	Remark		Drawing No.	A110603-1141
Approval			K.W Chan	Remark		Sheet	
Item Name	Banana Plug	Tolerance :					
Item No.	BP-214-EN	Unit : mm					